

Handling-Short Instruction for USB-RS232-Converter-Cable 9359-1-RS232 V1.0



The USB-Serial-Converter-Cable is an interface cable for the 9pin PC-Port. The cable should be connected to the USB-Port (type A-connector).

In the case of the Cable are 2 LED's embedded:

GREEN lights when data is transferred to the PLC
YELLOW lights when data is transferred from PLC to PC

Install the cable

First connect the USB-Serial-Converter-Cable into a free USB-Port of your computer. Please download from the below listed web-side the USB-driver for the USB-Serial-Converter-Cable.

Extract the file on your PC and guide the starting hardware-installation-wizard to this folder. The software will install the drivers for the USB-Serial-Converter-Cable automatically.

After the driver is installed successfully the COM port is displayed in Control Panel → System → Device manager → COM and LPT → Properties (Right mouse click) → Extended.

If you changed the COM-Port-Number, restart the PC to activate this COM-Port. After restart choose in the application the selected COM-Port in the configuration.

Using the original Siemens S5 software in a DOS window

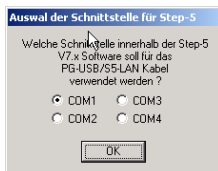
Do you use the original Siemens S5 patch once. You can download this named web-side and install it on that PC. Go on with choosing the language. „OK“. Press „Install“ and choose the installed. The installation routine is now have to select the used COM port. Then „End“ as soon as the installation is

Attention: For the Step5-Original COM4 selected. If necessary change the select “System”. In the Tab “Hardware“, Device-Manager the virtual COM-Port is and LPT”, Right click „USB Serial Port “Properties”. In the following dialog the button „Advanced“, in the next dialog you could choose the COM-Port.



software, then you need to run the S5- "Step5 additional driver" also from the

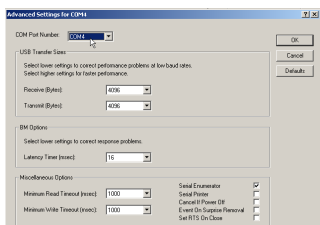
Select “USB-Serial” and confirm with folder where the S5 software is searching for the S5 software. Next you the S5 patch will be installed. Press completed.



application there **must** be one COM1 to COM port. Go to the Control Center, click button „Device manager“. In the listed in the section “Interfaces (COM (COMx))“, in the Context Menu choose select the tab „Port Settings“. Click onto

Using S5 Original-Software under Windows 98

A virtual created COM port cannot be used directly from a MSDOS Box (Windows 98). The solution is easy just install the “S5 VCOM for Win98”. In the PG-USB menu expand the tree and select the entry “S5 VCOM for Win98”. Choose the language and enter the path where the software should be installed. Select the name for the start menu and click next to proceed with the installation. After the End of the Installation the PC must be rebooted. S5 VCOM is installed into the Autostart-Directory and is started every time the PC boots. If an error occurs while installation or starting of driver, a message is shown. If correctly installed, on the bottom-right corner of the Screen a new tray icon is displayed.



the software should be installed. Select the name for the start menu and click next to proceed with the installation. After the End of the Installation the PC must be rebooted. S5 VCOM is installed into the Autostart-Directory and is started every time the PC boots. If an error occurs while installation or starting of driver, a message is shown. If correctly installed, on the bottom-right corner of the Screen a new tray icon is displayed.

This Tray-Icon shows, if a USB-Serial- and if a communication is in progress. (S=from



Converter-Cable is connected or not, PC to S5, E=from S5 zu PC)

If you double-click displayed:



on the Tray-Icon a new Dialog is

In the section State is for communication

displayed which Interface-Cable is used and if a connection exists.

In the section virtual on the left side is the Windows-Software

Port the following information is shown COM - Port which is used from and on the right side the COM-Port (IO-

Ports) of the MS-DOS Box. This COM-Port should be selected in the S5-Software. According which COM - Ports already exists, the next free COM-Port will be used:

existing COM

- NONE
- COM1
- COM1,COM2
- COM1,COM3
- COM1,COM2,COM3

from S5VCOM used

- COM1 [03F8h,IRQ4]
- COM2 [02F8h,IRQ3]
- COM3 [03E8h,IRQ4]
- COM2 [02F8h,IRQ3]
- COM4 [02E8h,IRQ3]

In the section Program you could exit the application, change the language of the application or minimize to the tray-icon.

PG 95 / PG 2000

Select under Options → Interface the corresponding virtual COM-Port.

S5 for Windows

In Files → Properties → Interface select the Protocol „S5“ and the virtual COM-Port

More information to Interface-Cables, also the actual handbooks online under

Under the web-address <https://www.process-informatik.de> are product specific documentations or software-driver/-tools available to download.

If you have questions or suggestions about the product, please don't hesitate to contact us.

Process-Informatik Entwicklungsgesellschaft mbH

Im Gewerbegebiet 1

DE-73116 Wäschenbeuren

+49 (0) 7172-92666-0

info@process-informatik.de

<https://www.process-informatik.de>

Copyright by PI 2006 - 2026

Menutree Website:

- + Products / docu / downloads
- + Hardware
- + Converter
- + USB-serial-converter cable

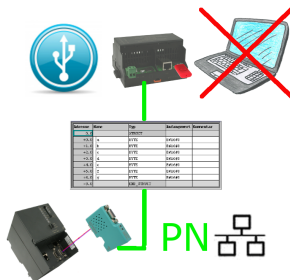


QR-Code Website:



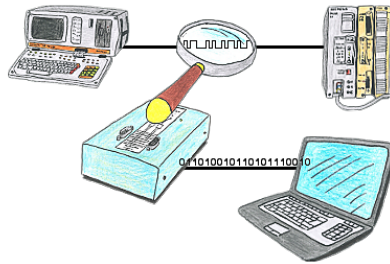
Please make sure to update your drivers before using our products.

Data backup S7-PLC over MPI/Profibus on USB-stick



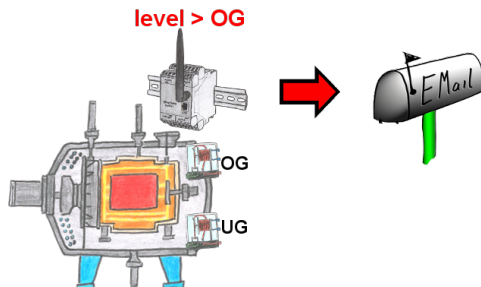
S7-PLC triggered DB-backup/-restore without additional PC via MPI/Profibus on USB-stick

Logging and analysis of communication data



You want check, why your application cant communicate with the PLC or why after some time past the communication will be broken? No problem, integrate the PG-FOX-hardware in this communication way and log through the PG-FOX-software on an PC the sended data in the exact time. So, you can later check the date and find a solution of the problem.

E-Mail notification



Do you monitor processes and upon reaching a predetermined upper/lower limit, you need a message? Then activate in the device the limit-value-monitoring and you get this message. Furthermore, the device also sends its state and you are always up to date.