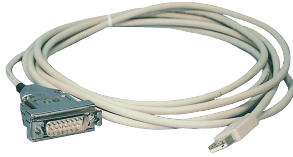


Handling-Short Instruction for PG-USB Cable 9359-1 V1.5



The PG-USB-Kabel is an interface cable for the 15pin PG-Port X4/X5 of a S5 plc. The cable should be connected to the USB-Port (type A-connector). This cable will be active against the plc while the power will be taken from the usb-port of the PC. For some special slot cards for the S5 you can get some special adapters with the several pinning of this card.

This cable can be prolonged with the classic prolongation (pin 2+9 and 6+7 itself drilled) up to 100m 1to1 pin.

In the Case of the Cable are 2 LED's embedded

GREEN lights when data is transferred to the PLC
YELLOW lights when data is transferred from PLC to PC

Install the cable

First connect the PG-USB cable into a free USB-Port of your computer. Please download from the below listed web-side the USB-driver for the PG-USB-cable.

Extract the file on your PC and guide the starting hardware-installation-wizard to this folder. The software will install the drivers for the PG-USB cable automatically.

After the driver is installed successfully the COM port is displayed in Control Panel → System → Device manager → COM and LPT → Properties (Right mouse click) → Extended.

If you changed the COM-Port-Number, restart the PC to activate this COM-Port. After restart choose in the application the selected COM-Port in the configuration.

Using the original Siemens S5 software in a DOS window

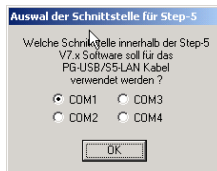
Do you use the original Siemens S5 patch once. You can download this named web-side and install it on that PC. Go on with choosing the language. with „OK“. Press „Install“ and choose installed. The installation routine is now have to select the used COM port. Then „End“ as soon as the installation is



software, then you need to run the S5-"Step5 additional driver" also from the

Select the PG-USB cable and confirm the folder where the S5 software is searching for the S5 software. Next you the S5 patch will be installed. Press completed.

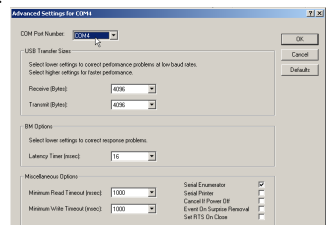
Attention: For the Step5-Original COM4 selected. If necessary change the select "System". In the Tab "Hardware", Device-Manager the virtual COM-Port is and LPT", Right click „USB Serial Port "Properties". In the following dialog the button „Advanced“, in the next dialog you could choose the COM-Port.



application there **must** be one COM1 to COM port. Go to the Control Center, click button „Device manager“. In the listed in the section "Interfaces (COM (COMx)", in the Context Menu choose select the tab „Port Settings“. Click onto

Using S5 Original-Software under Windows 98

A virtual created COM port cannot be used directly from a MSDOS Box (Windows 98). The solution is easy just install the "S5 VCOM for Win98". In the PG-USB menu expand the tree and select the entry "S5 VCOM for Win98". Choose the language and enter the path where the software should be installed. Select the name for the start menu and click next to proceed with the installation. After the End of the Installation the PC must be rebooted. S5 VCOM is installed into the Autostart-Directory



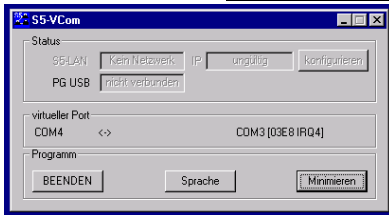
and is started every time the PC boots. If an error occurs while installation or starting of driver, a message is shown. If correctly installed, on the bottom-right corner of the Screen a new tray icon is displayed. The software should be installed. Select the name for the start menu and click next to proceed with the installation. After the End of the Installation the PC must be rebooted. S5 VCOM is installed into the Autostart-Directory and is started every time the PC boots. If an error occurs while installation or starting of driver, a message is shown. If correctly installed, on the bottom-right corner of the Screen a new tray icon is displayed.

This Tray-Icon shows, if a PG-USB-Cable is communication is in progress. (S=from PC to E=from S5 zu PC) If you double-click displayed:



connected or not, and if a S5,E=from S5 zu PC) on the Tray-Icon a new Dialog is

In the section State is for communication



displayed which Interface-Cable is used and if a connection exists.

In the section virtual on the left side is the Windows-Software Ports) of the MS-selected in the S5-Software. According which COM - Ports already exists, the next free COM-Port will be used:

Port the following information is shown COM - Port which is used from and on the right side the COM-Port (I/O-DOS Box. This COM-Port should be

existing COM

- NONE
- COM1
- COM1,COM2
- COM1,COM3
- COM1,COM2,COM3

from S5VCOM used

- COM1 [03F8h,IRQ4]
- COM2 [02F8h,IRQ3]
- COM3 [03E8h,IRQ4]
- COM2 [02F8h,IRQ3]
- COM4 [02E8h,IRQ3]

In the section Program you could exit the application, change the language of the application or minimize to the tray-icon.

PG 95 / PG 2000

Select under Options → Interface the corresponding virtual COM-Port.

S5 for Windows

In Files → Properties → Interface select the Protocol „S5“ and the virtual COM-Port

Accessories

- AG-150-Adapter for PG-USB-Kabel
- CP525K-Adapter for PG-USB-Kabel
- Sinum-Adapter for PG-USB-Kabel
- S5-LAN Module (Programming the S5 over Network)

- CP525-Adapter for PG-USB-Kabel
- WF470-Adapter for PG-USB-Kabel
- PG-USB Lengthen set

Further interface-cable for S5

PG-UNI-Kabel

- Couples the PC (9pol. COM-interface) with the 15 pole X4/X5 interface port of the plc
- Galvanically separably to 1kV with PG ISO adapter
- Prolongable up to 300 meters
- Complete electronics in the plug housing
- Supply from the PLC over the current sources of the PG-port
- Functioned also at some CP's, IP's and Sinumerik controls



PG-UNI-II Kabel

- ESD firm transducer component up to 15kV
- 9pin and 15pin plug housings are made of solid metal
- For controll of data transmission, there are two LED's integrated (Rx/D and Tx/D).
- Couples the PC (9pol. COM-interface) with the 15 pole X4/X5 interface port of the plc
- Galvanically separably to 1kV with PG ISO adapter
- Prolongable up to 300 meters
- Complete electronics in the plug housing
- Supply from the PLC over the current sources
- Functioned also at some CP's, IP's and Sinumerik controls



PG-COM-Kabel

- Couples the PC (9pol. COM-interface) with the 15 pole X4/X5 interface port of the plc
- Complete electronics in the plug housing
- Supply from the PLC over the 5V of the PG-port



PG-ISO-SET

- Galvanically separable from pc to the plc up to 1kV
- contact-protected housing, it is plastic housing
- The set contains PG-UNI-Kabel (3m) Art.Nr.9359-3 and the PG-ISO-Adapter Art.Nr.9359-8
- Supply of the module from the plc Voltage 5V and/or 24V

SC-09-Kabel

- Couples the PC (9pol. COM-interface) with the RS485 interface port of the plc
- PLC coupling with 25pin D-Sub or with Mini-Din-plug (special adapter)
- Supply from the PLC over the 5V of the PG-port
- Complete electronics in the plug housing



PG-ISO-Adapter for PG-UNI/PG-UNI-II

- Galvanically separable from pc above the PG-UNI-Kabel to the plc up to 1kV
- contact-protected housing, it is plastic housing
- Generates a new Ground and new Current Sources for the communication
- Supply of the module from the plc Voltage 5V and/or 24V



S5-LAN+-Modul

- 3 minutes and PG interface of the S5-PLC-control is network-compatible
- AS511 via virtual COM port
- S7-TCPIP RFC1006 compatible (S7 panel to S5 PLC)
- Supply of the module from the PLC voltage 24V
- Active module, integrated power sources for TTY communication



S5-BRIDGE (LAN and WIFI communication parallel)

- 10 minutes and PG interface of the S5 PLC control is network-compatible (cable and/or WIFI)
- AS511 via virtual COM port (cable and/or WIFI)
- S7-TCPIP RFC1006 compatible (S7 panel on S5 PLC, cable and/or WIFI)
- Supply of the module from the PLC voltage 24V
- Active module, integrated power sources for TTY communication



Netz-Adapter for PG-UNI/PG-UNI-II

- Generates new Current Sources for the communication
- Operation area: damaged Current Sources, not existing Current Sources, sanded Current Sources, passive Current Sources
- Supply of the module with 24V external



Additional adapters for PG-UNI/PG-UNI-II

general : Small Adapter, only 10cm long
Plug mechanics fitting to the plc



CP525-Adapter

- Connection to the **programming port** of the CP525

CP525-K-Adapter

- Connection to the **communication port** of the CP525
- This adapter can be used for following devices, too: CP524 and SAS523/525

AG150-Adapter

- **Only** use with the Netzadapter, because plc AG150 has an passive interface port!

WF470-Adapter

- **Only** used with the Netzadapter, because WF470 has an passive interface port!

SINUM-Adapter

- This adapter can be used for following plc-type: 805, 810, 820, 840, 850, 880

Additional adapters for PG-USB

general : Small Adapter, only 10cm long
Plug mechanics fitting to the plc



CP525-Adapter

- Connection to the **programming port** of the CP525

CP525-K-Adapter

- Connection to the **communication port** of the CP525
- This adapter can be used for following devices, too: CP524 and SAS523/525

AG150-Adapter

WF470-Adapter

SINUM-Adapter

- This adapter can be used for following plc-type: 805, 810, 820, 840, 850, 880

Under the web-address <https://www.process-informatik.de> are product specific documentations or software-driver/-tools available to download.
If you have questions or suggestions about the product, please don't hesitate to contact us.

Process-Informatik Entwicklungsgesellschaft mbH

Im Gewerbegebiet 1

DE-73116 Wäschenbeuren

+49 (0) 7172-92666-0

info@process-informatik.de

<https://www.process-informatik.de>

Copyright by PI 2004 - 2026

Menutree Website:

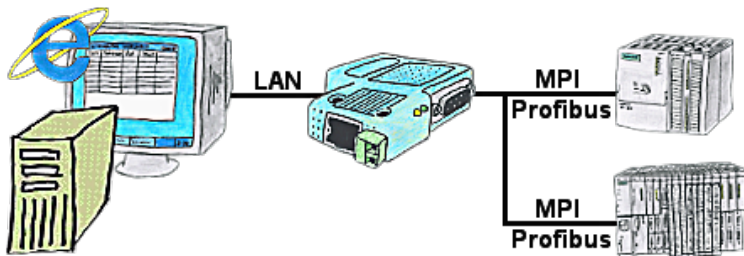
- + Products / docu / downloads
- + Hardware
 - + Programming devices
 - + Programming adapter S5
 - + S5 over USB
 - + PG-USB

QR-Code Website:



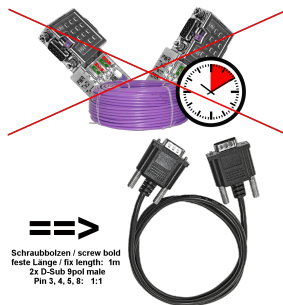
Please make sure to update your drivers before using our products.

Variable-chart without Step7-programming package



You would like to give your customer the opportunity to read current numbers of the manufacturing Online, without installing a visualisation or even the STEP7-package? Then a S7-LAN with the option Status Variable" is needed, and your customer can take a look at these password protected data on a site of the integrated webservice.

Save time and money



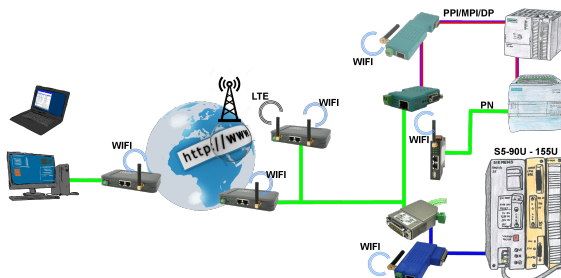
Connect panel to PLC or PLC to PLC, why waste time and money unnecessarily?

Get an expensive bus-cable, screw the bus-connector and also make the classic mistake in the wiring (shield-connection to bus-line). Why all this effort when there is a ready-made solution:

MPI/Profibus-connection-cable with a length of 1m, cast D-Sub-housing with screw-bolts. Only the signals A + B (bus itself), ground and RTS-AS are 1to1 applied, so no problems with possible voltages, compensating currents.

Simply plug it on to the MPI- or Profibus-interface, screw it on and communicate.

Simple and uncomplicated remote maintenance

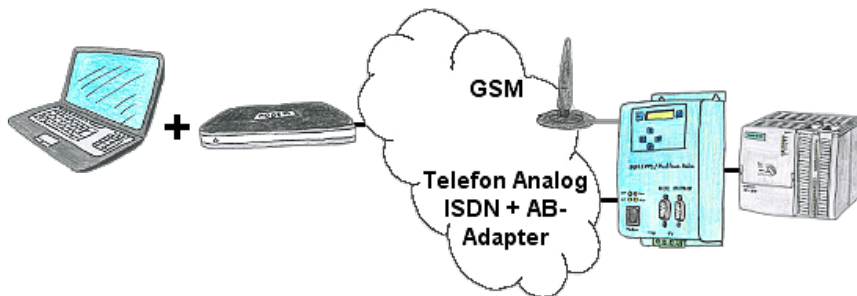


Simple and uncomplicated remote-access to your devices/systems via the Internet VPN-tunnel, registration at any portal is not necessary, activate the device and select and communicate with the opposite system

No great effort to implement access. Use of the devices without consulting IT, no time-consuming commissioning procedure

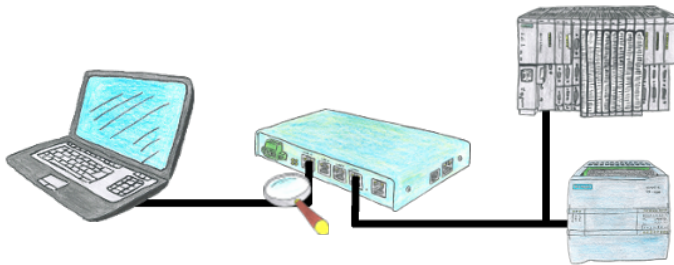
All your devices in your own cloud, no access from third-party CONNECT-devices to your devices/systems

Remote maintenance / telecontrol of PLC



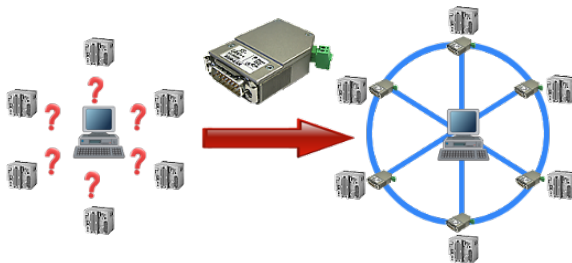
The access to the connected PLC with the Siemens TS-software or PG-2000 including TS-option results of coupling via Analogue-, ISDN- (only with AB-adapter) as well as GSM-line.

Integrated Firewall-protection



You looking for a device with which you can create a remote maintenance via the Internet without compromising security? No problem, the TELE-Router offers exactly this feature. With the built-in firewall, you can adjust the device completely to your requirements.

Network your controls and increase the availability of backups



Your machines are fully distributed in your company area, it is not always a PC connected with the machine. What could be better than to connect the machines to your company network and backup the data central from one point!

With the option "Communication via S5-LAN++" and the S5-LAN++-modules, you can meet this requirement immediately.