

Under the web-address <https://www.process-informatik.de> are product specific documentations or software-driver/-tools available to download.

If you have questions or suggestions about the product, please don't hesitate to contact us.

Process-Informatik Entwicklungsgesellschaft mbH

Im Gewerbegebiet 1

DE-73116 Wäschenbeuren

+49 (0) 7172-92666-0

info@process-informatik.de

<https://www.process-informatik.de>

Menutree Website:

- + Products / docu / downloads
- + Hardware
 - + Programming devices
 - + Programming adapter S5
 - + S5 over RS232
 - + S5toMPI



QR-Code Website:



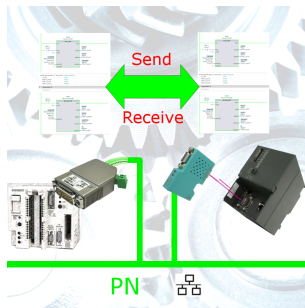
Please make sure to update your drivers before using our products.

Remote-maintenance Siemens-S7-PLC with PN-Port with firewall



Remote-maintenance of a Siemens-controller with network-connection via secure VPN-tunnel and scalable firewall

S7-300/400 (MPI/DP) to S5



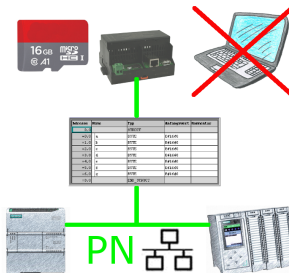
Coupling S7-controller with MPI/Profibus at S5-control with PD-port via network

Worldwide access



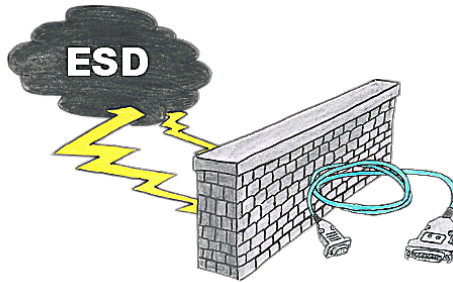
No matter where you are, access to the EtherSens-device and its web-interface is available from everywhere.

Data backup S7-PLC PN-port on SD-card



S7-PLC triggered DB-backup/-restore without additional PC via PN-port on SD card

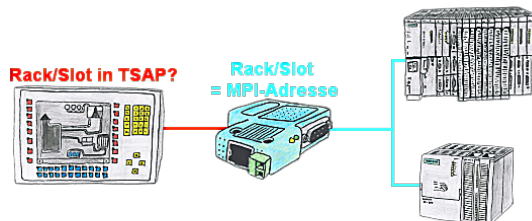
Insensible communication with the S5-PLC



Safe communication with the S5-PLC in an environment of radiant-converters and motor-controls. Electrostatic-charging is also a KO-criterion for operation of interface-cable, a discharge and the interface-product is damaged or even defective.

PG-UNI-II is prepared for this, with its full-metal-cast-housing and ESD-proof components it offers the best protection against such influences. The shielding of the cable connected to the metal-housing is the solution. Of course, the cable can be extended to a TTY-distance of up to 300m, using of adapter for PG-UNI-cables is also possible.

Transformation of Rack/Slot in TSAP to MPI-address



Your panel or visualisationsystem addresses the used PLC with Rack/Slot in TSAP? No problem, activate this mode in the S7-LAN and you will get actual data from the PLC.