

Under the web-address <https://www.process-informatik.de> are product specific documentations or software-driver/-tools available to download.

If you have questions or suggestions about the product, please don't hesitate to contact us.

Process-Informatik Entwicklungsgesellschaft mbH

Im Gewerbegebiet 1

DE-73116 Wäschenbeuren

+49 (0) 7172-92666-0

info@process-informatik.de

<https://www.process-informatik.de>

Menutree Website:

- + Products / docu / downloads
- + Accessories
 - + Antennas / Accessories
 - + Magnetic base antenna



QR-Code Website:



Please make sure to update your drivers before using our products.

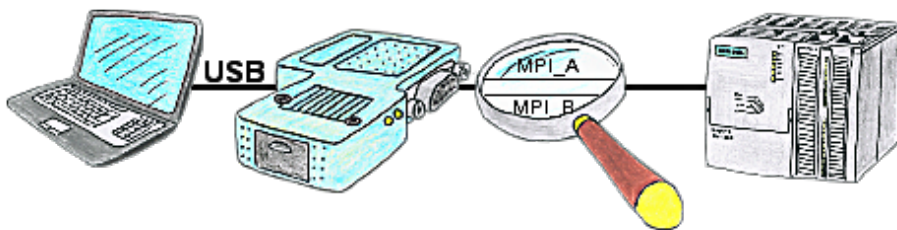
Serial communication with S5-PLC (CPU-assemblies 15pin)



S5-PLC communication from PC with serial COM-port and your programming package?

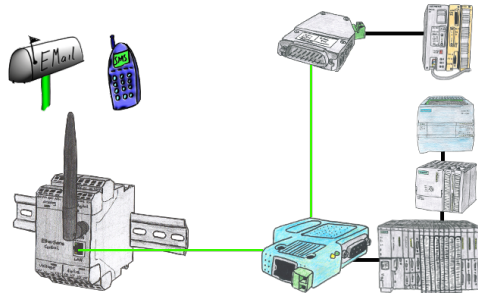
PG-Com-cable up to a length of 15m are the appropriate interface-product. Without special accessories, without external supply, plugged on PC and S5 PLC and work immediately. Connection with original Siemens-sliding-locking to S5-PLC, with screw-bolts on the PC. Function with S5-90U to S5-155U. Connection PLC-side 15pin, PC 9pin (adaptation to 25pin at any time possible).

Access to MPI/Profibus without power supply



You're right in the middle of your production line and are standing in front of a passive assembly just like a switcher or a ET200, in that case you won't be able to go Online without an external power supply of your programming adapter, unless you're using the S7USB. This module is supplied completely from the USB-interface.

Message dispatch from the PLC



Send directly from your PLC news, statuses, alarms as SMS or email.

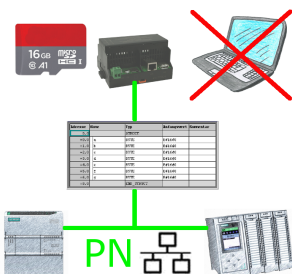
Universal communication at all interfaces



Wired or wireless communication (WIFI) via the same adapter with the respective control Devices from the BRIDGE-family always connect a wired-network with a wireless-network (WIFI) and a specific PLC-interface. This gives you access to the directly connected controller via WIFI (with S7 to the entire bus) as well as to the wired Ethernet. Of course also from wired Ethernet to WIFI and control/bus.

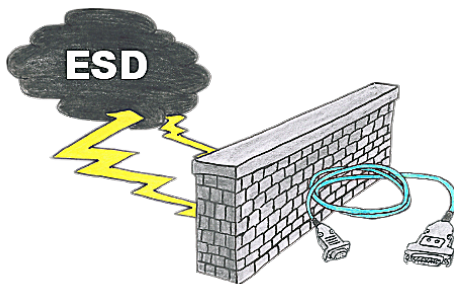
Always connected to each other, all made possible by the devices of the BRIDGE-family.

Data backup S7-PLC PN-port on SD-card



S7-PLC triggered DB-backup/-restore without additional PC via PN-port on SD card

Insensible communication with the S5-PLC



Safe communication with the S5-PLC in an environment of radiant-converters and motor-controls. Electrostatic-charging is also a KO-criterion for operation of interface-cable, a discharge and the interface-product is damaged or even defective.

PG-UNI-II is prepared for this, with its full-metal-cast-housing and ESD-proof components it offers the best protection against such influences. The shielding of the cable connected to the metal-housing is the solution. Of course, the cable can be extended to a TTY-distance of up to 300m, using of adapter for PG-UNI-cables is also possible.