

Under the web-address <https://www.process-informatik.de> are product specific documentations or software-driver/-tools available to download.
If you have questions or suggestions about the product, please don't hesitate to contact us.

Process-Informatik Entwicklungsgesellschaft mbH
Im Gewerbegebiet 1
DE-73116 Wäschenbeuren
+49 (0) 7172-92666-0
info@process-informatik.de
<https://www.process-informatik.de>

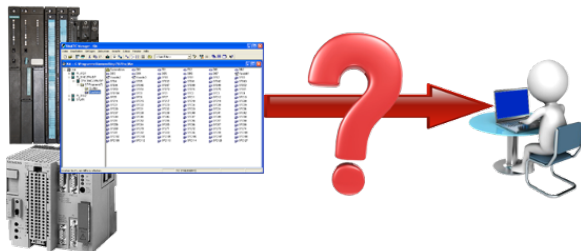
Menutree Website:

- + Products / docu / downloads
- + Accessories
- + Connector plug / equipment
- + MPI- / Profibus connecting cable (for Tele-Service)



Please make sure to update your drivers before using our products.

Automatical backup of your PLC



Guaranteeing security against production-downtimes through regular backups of S5- or S7-PLCs on your PC. S5/S7/H1-backup/restore-software saves all projected controls at a predetermined time. Whether every minute, hourly, daily, weekly or once a month, the PLC is completely read out and saved on the hard-disk/network-drive of the computer.

If the backup-battery fails or the PLC is damaged, you can use this backup-file to restore the PLC.

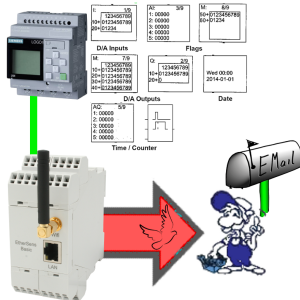
Universal - prepared for all situations



Prepared for every application, who likes to go unprepared the situation that expects one at a use on site, except house? With the S5/S7-WIFI-sets you have everything necessary for use in a handy plastic-case. No forgotten cable, often only a cent article but worth gold if you forgot him at home.

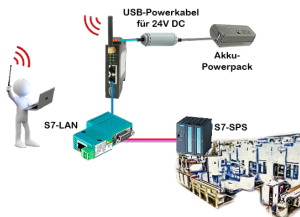
No unnecessary search for accessories, according to the motto: "open suitcase, connect/build and work".

Send Email with LOGO!



Send of all kinds of eMail-messages controlled by the LOGO!-Control

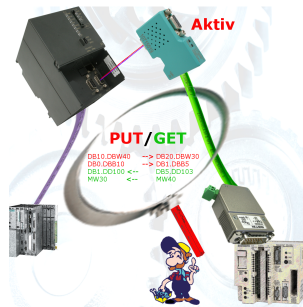
Independent operation through power-pack-supply



You want for e.g. moving around your system/control and need a 24V-DC-supply for your access-point ALF-UA?

With USB-power-cable and a USB-power-bank/-accu, the problem can be solved immediately with little effort.

Connecting S7-/S5-PLCs without head-station

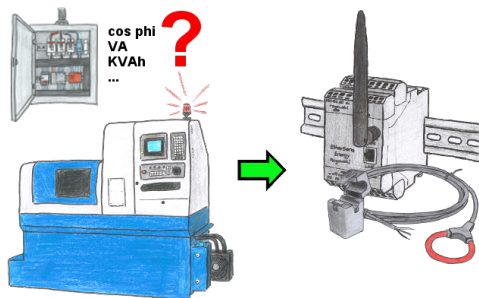


Pair your S7 directly with your S5, thanks to the active PUT/GET in the S7-LAN no problem.

Each MPI/Profibus-CPU exchanges data directly without using a CP.

No head-control or changes in the S5-PLC needed.

Energy-data acquisition



Do you also need the energy-consumption of your plant or need to determine the $\cos \phi$? With the EtherSens Energy you can capture and record by using a Rogowski-coil or folding-core the required values.