

Under the web-address <https://www.process-informatik.de> are product specific documentations or software-driver/-tools available to download.
If you have questions or suggestions about the product, please don't hesitate to contact us.

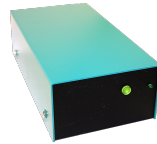
Process-Informatik Entwicklungsgesellschaft mbH
Im Gewerbegebiet 1
DE-73116 Wäschenbeuren
+49 (0) 7172-92666-0
info@process-informatik.de
<https://www.process-informatik.de>

Menutree Website:

- + Products / docu / downloads
- + Hardware
 - + Memory modules / Prommer
 - + EPROM-ERASER UVL3



QR-Code Website:



Please make sure to update your drivers before using our products.

Wireless around the Eaton-PLC



Move wirelessly around the Eaton-PLC and communicate for example ONLINE in the status

Programming of S5-PLC's via LAN



You would like to respond to your S5-PLC via LAN, but not integrate an Ethernet-CP?
No problem, plug the S5-LAN++ on the PD-interface and access via LAN.

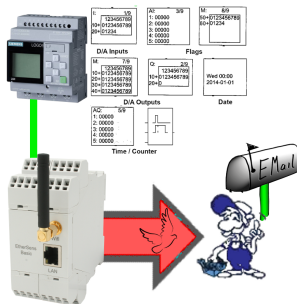
Universal communication at all interfaces



Wired or wireless communication (WIFI) via the same adapter with the respective control Devices from the BRIDGE-family always connect a wired-network with a wireless-network (WIFI) and a specific PLC-interface. This gives you access to the directly connected controller via WIFI (with S7 to the entire bus) as well as to the wired Ethernet. Of course also from wired Ethernet to WIFI and control/bus.

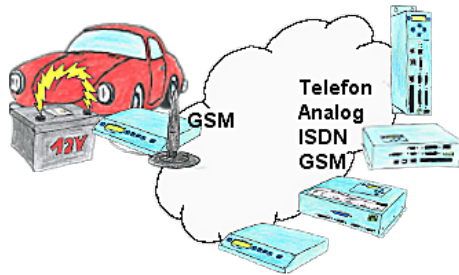
Always connected to each other, all made possible by the devices of the BRIDGE-family.

Send Email with LOGO!



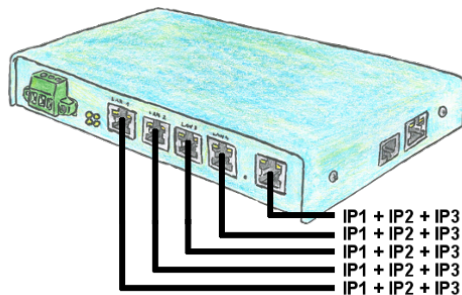
Send of all kinds of eMail-messages controlled by the LOGO!-Control

Use in the car with a 12V supply only



You're on road with your car and your employee reports a failure? What next? Approach the next parking place and try to get a telephone line to solve the problem? Or solve the problem in your head? Hit the next parking place and start your Tele-Book which is plugged on your car's cigarette lighter, and build-up a connection to your installation. With the notebook you will solve the problem within a short time.

Universal network-administration



You need to remote maintenance multiple networks simultaneously and your existing switch / router does not have that many ports? No problem, with the TELE-Router you are able to assign up to 3 IP addresses to each LAN / WAN port, so you can communicate with the various segments and networks.