

Under the web-address <https://www.process-informatik.de> are product specific documentations or software-driver/-tools available to download.

If you have questions or suggestions about the product, please don't hesitate to contact us.

Process-Informatik Entwicklungsgesellschaft mbH

Im Gewerbegebiet 1

DE-73116 Wäschenbeuren

+49 (0) 7172-92666-0

[info@process-informatik.de](mailto:info@process-informatik.de)

<https://www.process-informatik.de>

**Menutree Website:**

- + Products / docu / downloads
- + Hardware
- + Memory modules / Prommer
- + Memory-modules

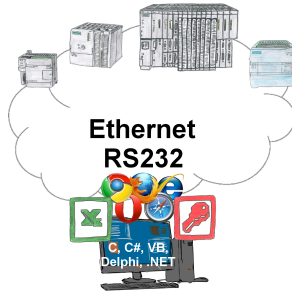


**QR-Code Website:**



Please make sure to update your drivers before using our products.

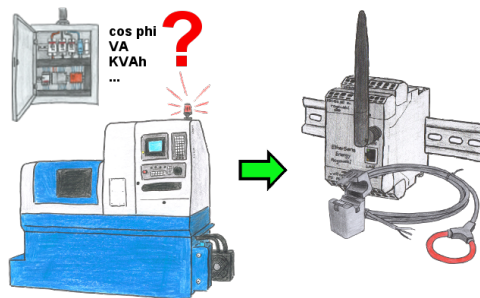
## Communication-driver for S7-PLC



S7-PLCs and you need data in your PC or production planning system?

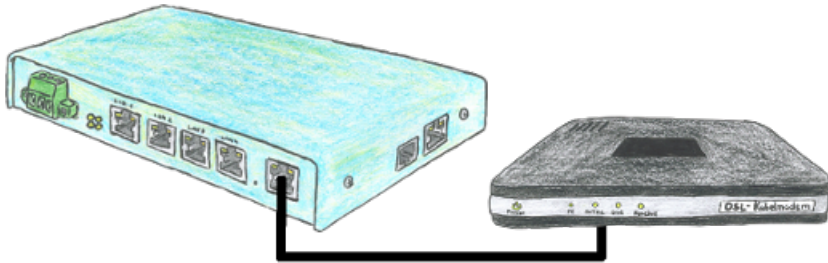
The S7-communication-drivers connect the office-world with the control-world. Be it classic with a serial-port of the PC up to communication over the network. Thanks to additional adapters (such as S7-LAN), controllers without a LAN connection can be connected to the network. Nothing stands in the way of communication with an IP-address. On your PC for Windows as a DLL-file, for Linux as an object, you have tools where you can access the data of the controls by calling up functions such as "ReadBlock" or "WriteFlag". Tie for e.g. the DLL into your project and your application already has PLC-access or simply access the data with Excel and process it in Excel.

## Energy-data acquisition



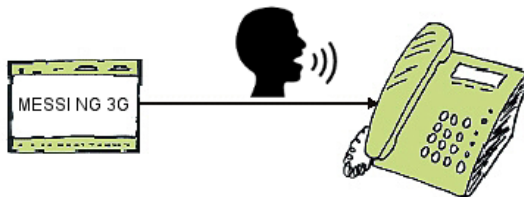
Do you also need the energy-consumption of your plant or need to determine the cos phi? With the EtherSens Energy you can capture and record by using a Rogowski-coil or folding-core the required values.

## Operation on DSL-cable-modem



You are looking for a device which can be operated even with DSL? No problem, just plug in your TELE-router to a DSL cable modem, enter the parameters relating to the access data into the device and you are connected to Internet.

## Direct Voice-speech-output with MESSI NG 3G



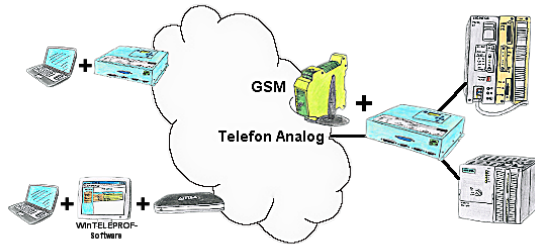
Transmission of fault messages as a voice message to several participants

MESSI NG 3G can send stored-voice-messages to specific recipients depending on the defined input and signal status. To do this, the specified phone-numbers are called according to the phone-number-plan and then the digitized voice-message is transmitted.

Depending on whether the message has been acknowledged or not, the next participant in the numbering-plan will be informed.

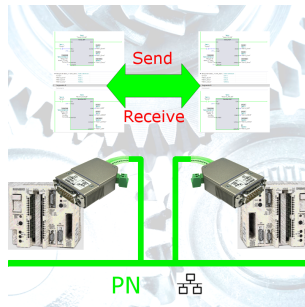
Let yourself for example, giving water-levels over the phone, MESSI NG 3G will do this for you.

## Remote maintenance / telecontrol of PLC-devices



Access to the connected PLC takes place by coupling via Analogue-, ISDN- (only with AB-adapter) and GSM-(only with external GSM-modem)-line.

## S5 to S5



Coupling S5-controller with PD-port at S5-controller with PD-port via network