

## Handling short instructions for

### ProfiNet-WATCHDOG



#### power supply:

If you want to use the device you have to supply power to it first.

The device can either be powered with 5V via the USB connector (*only for desktop case*) or with 24V via the included phoenix connector (*attention: polarity must be respected*).

#### access to the web interface:

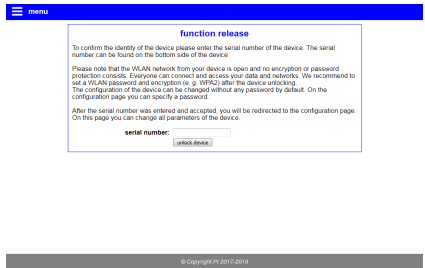
After you have supplied power to your device you have the ability to access the web interface of the device.

The ProfiNet-WATCHDOG provides an own WLAN network via its integrated WLAN interface. The WLAN network has the name „ProfiNet-WATCHDOG WiFi“. This network is not encrypted, so you can connect to it easily without entering a password or something else.

If you are connected with the WLAN network of the ProfiNet-WATCHDOG your computer or smart phone get's an IP address automatically via DHCP. If your computer / smart phone is not configured for DHCP you can either configure your network card to use an IP address between 192.168.1.2 and 192.168.1.254 or activate DHCP on it.

If your computer doesn't have a WLAN interface or if you don't want to use it you can still access the ProfiNet-WATCHDOG through the optionally available “Ethernet over USB” adapter. If you have brought the adapter already, you only have to connect it to the USB socket of the device. On the LAN interface of the adapter a DHCP server is also running by default. If your PC is not configured for DHCP you can either configure your network card to use an IP address between 192.168.0.2 and 192.168.0.254 or activate DHCP on it.

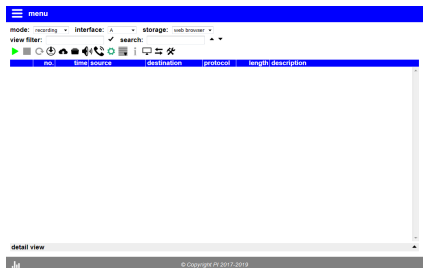
Now you can open an internet browser (e. g. Mozilla Firefox) and enter the IP address 192.168.1.1 (for WLAN) or 192.168.0.1 (for USB-LAN) in the address line. Next you should see the web interface of the ProfiNet-WATCHDOG device with a hint window and an input field (see picture on the right side). On this page you have to enter the serial number of the device, which can be found on the bottom or right side of the device.



After you have entered the serial number the device is unlocked and can be used normally. To be able to customize the configuration directly, you will be redirected to the configuration page (see picture on the left) after entering the serial number. We recommend that you check and maybe customize the configuration.



As soon as you have saved the configuration via the “submit configuration” button on the configuration page, your browser will redirect you to the start page of the device (see picture on the right).



## Analyzing the ProfiNet network:

The ProfiNet-WATCHDOG has the ability to analyze the network traffic on the connected ProfiNet. First you have to connect the ProfiNet master PLC with a LAN cable to the interface “Master-SPS” of the ProfiNet-WATCHDOG. Next you can connect the other ProfiNet subscribers with another cable to the interface “Slaves”. Now your ProfiNet is lead through the ProfiNet-WATCHDOG without affecting the real time behavior.

For analyzing and monitoring the ProfiNet network you have the menu item “overview” on the web interface of the device.

An detailed description as well as an explanation of the single web pages can be found in the manual of this device. The user manual can be found on the product page of our web page under the download section *Documentation* → *Handbook ProfiNet-WATCHDOG*.

Under the web-address <https://www.process-informatik.de> are product specific documentations or software-driver/-tools available to download.  
If you have questions or suggestions about the product, please don't hesitate to contact us.

Process-Informatik Entwicklungsgesellschaft mbH

Im Gewerbegebiet 1

DE-73116 Wäschenbeuren

+49 (0) 7172-92666-0

[info@process-informatik.de](mailto:info@process-informatik.de)

<https://www.process-informatik.de>

Copyright by PI 2019 - 2026

**Menutree Website:**

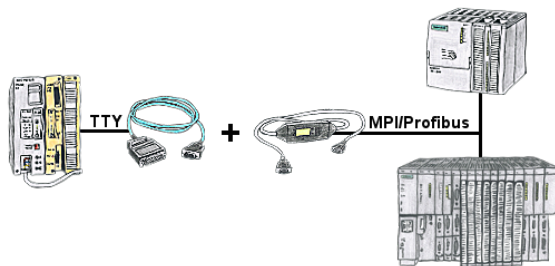
- + Products / docu / downloads
- + Hardware
- + Analysis technic
- + ProfiNet - WATCHDOG
- + ProfiNet - WATCHDOG - Din-rail mounting

**QR-Code Website:**



Please make sure to update your drivers before using our products.

## Coupling of S5-PLC with S7-PLC via PD-interfaces

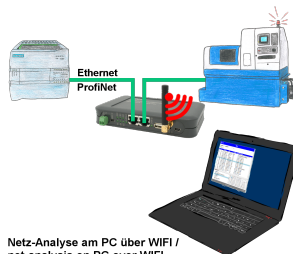


S5 in the machine-park, conversion to S7 not profitable, central-control still requires production-data, who does not know this problem.

With "S5anMPI" you connect the S5-PLC with a standard interface-cable with the MPI/PROFIBUS of a S7-PLC. Loading handling-blocks in both PLCs, communication integrated and "S5anMPI" exchanges DB-content on request of the respective PLC. Configuration in the "S5anMPI" which PLC is active, also both PLCs active is possible.

Data-exchange without much effort and the S5-PLC continues in the S7-combination as usual and does not have to be replaced.

## Network analysis/monitoring made easy



Netz-Analyse am PC über WIFI /  
net-analysis on PC over WIFI  
Störungs-Erkennung / Failure detection  
Ausfall-Wahrscheinlichkeit / Failure probability  
Protokoll-Aufzeichnung / Protocol recording

Analyze network-problems and network-conflicts with little effort. Simply plug the TINA into the network, open website of the integrated web-server via WIFI and start working.

No unnecessary search for a hub to record the logs. TINA records in the usual WireShark-format, i.e. save the recording on a PC and view and evaluate it later with WireShark.

Monitoring the network, automatically send an email to the administrator if there is no participant or if there is a new participant (Intrusion-detection into the network)

Calculate the probability of failure of the participants

All of this can be achieved with TINA